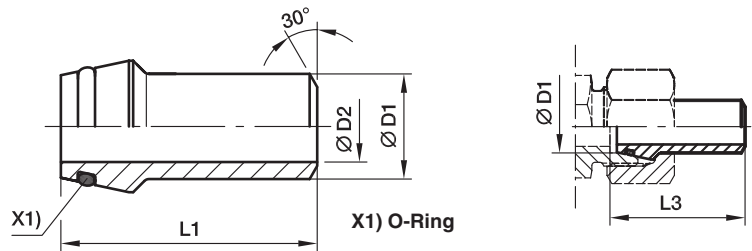


**SKA Schweißkegel**

EO 24° Schweißkegel / Anschweiß-Anschluss



Bau- reihe	D1 	D2	L1	L3	empfohlenes Rohr	Gewicht g/1 St.	Bestellzeichen	PN (bar) <sup>1)</sup>		
								Stahl	Edelstahl	
L <sup>3)</sup> /S <sup>4)</sup>	06	3,0	31,0	31,5	06x1,5	7	SKA06X1.5	528	539	
	08	4,5	31,0	31,5	08x1,5	11	SKA08X1.5	414	424	
	08	4,0	31,0	31,5	08x2,0	11	SKA08X2	528	539	
	10	8,0	32,5	33,5	10x1,0	13	SKA10X1	249	242	
	10	7,0	32,5	33,5	10x1,5	13	SKA10X1.5	358	349	
	10	6,0	32,5	33,5	10x2,0	16	SKA10X2	460	447	
	12	9,0	32,5	33,5	12x1,5	21	SKA12X1.5	305	297	
	12	8,0	32,5	33,5	12x2,0	20	SKA12X2	393	383	
	12	7,0	32,5	33,5	12x2,5	22	SKA12X2.5	476	463	
	L <sup>3)</sup>	15	11,0	34,0	34,5	15x2,0	29	SKA15X2	315	315
		15	10,0	34,0	34,5	15x2,5	31	SKA15X2.5	315	315
		18	13,0	35,5	36,5	18x2,5	40	SKA18X2.5	315	315
22		17,0	38,5	39,5	22x2,5	57	SKA22X2.5	160	160	
28		23,0	41,5	42,5	28x2,5	73	SKA28X2.5	160	160	
28		22,0	41,5	42,5	28x3,0	89	SKA28X3	160	160	
35		28,0	47,5	49,5	35x3,5	140	SKA35X3.5	160	160	
35		27,0	47,5	49,5	35x4,0	150	SKA35X4	160	160	
42		36,0	47,5	50,0	42x3,0	155	SKA42X3	160	160	
42		34,0	47,5	50,0	42x4,0	190	SKA42X4	160	160	
S <sup>4)</sup>		14	10,0	38,5	39,5	14x2,0	26	SKA14X2	343	334
		14	8,0	38,5	39,5	14x3,0	33	SKA14X3	487	474
	16	13,0	39,0	40,5	16x1,5	32	SKA16X1.5	234	228	
	16	12,0	39,0	40,5	16x2,0	31	SKA16X2	305	297	
	16	11,0	39,0	40,5	16x2,5	38	SKA16X2.5	372	362	
	16	10,0	39,0	40,5	16x3,0	41	SKA16X3	400	400	
	20	16,0	45,0	47,0	20x2,0	57	SKA20X2	249	242	
	20	15,0	45,0	47,0	20x2,5	57	SKA20X2.5	305	297	
	20	14,0	45,0	47,0	20x3,0	64	SKA20X3	358	349	
	20	13,0	45,0	47,0	20x3,5	71	SKA20X3.5	400	400	
	20	12,0	45,0	47,0	20x4,0	78	SKA20X4	400	400	
	25	19,0	49,5	53,0	25x3,0	89	SKA25X3	294	286	
	25	18,0	49,5	53,0	25x3,5	100	SKA25X3.5	337	328	
	25	17,0	49,5	53,0	25x4,0	111	SKA25X4	379	369	
	25	15,0	49,5	53,0	25x5,0	125	SKA25X5	400	400	
	30	24,0	52,0	57,0	30x3,0	113	SKA30X3	249	242	
	30	22,0	52,0	57,0	30x4,0	141	SKA30X4	323	314	
	30	20,0	52,0	57,0	30x5,0	166	SKA30X5	393	383	
	30	18,0	52,0	57,0	30x6,0	188	SKA30X6	400	400	
	38	32,0	56,5	64,0	38x3,0	163	SKA38X3	200	195	
	38	30,0	56,5	64,0	38x4,0	209	SKA38X4	261	254	
	38	28,0	56,5	64,0	38x5,0	247	SKA38X5	315	315	
	38	26,0	56,5	64,0	38x6,0	270	SKA38X6	315	315	
	38	24,0	56,5	64,0	38x7,0	270	SKA38X7	315	315	

<sup>1)</sup> Druckwert genannt = Artikel lieferbar

<sup>3)</sup> L = Leichte Baureihe; <sup>4)</sup> S = Schwere Baureihe

$\frac{PN \text{ (bar)}}{10} = PN \text{ (MPa)}$

\*Ergänzen Sie bitte die Bestellzeichen mit den **Kennbuchstaben** für das gewünschte Material.

Bestellzeichen-Ergänzungen			
Material	Kennbuchstaben Oberfläche und Material	Beispiel	Standard-Dichtungswerk- stoff (keine zusätzl. Kenn- buchstaben erforderlich)
Stahl		SKA16X2	NBR
Edelstahl	71	SKA16X271	VIT

